

$$0,23 + \square = 3,49 \quad \square = 3,49 - 0,23 = 3,26$$

(3)  $24 \times 25000 = 600000 \text{ cm} = 6 \text{ km}$   
 $7 \text{ 分 } 30 \text{ 秒} = 450 \text{ 秒}$

$$6 \text{ km} \times \frac{408}{450} = 48$$

4. 48 km/日

(4) 昨日正午  $\rightarrow$  0:00  $\rightarrow$  今日午前 6:00 合計 18 時間  $2 \times 6 \times 60 \times 60$  (81/秒)

昨日正午  $\rightarrow$  0:00  $\xrightarrow{\text{今日}}$  0:00  $\xrightarrow{\text{明日}}$  午後4:00

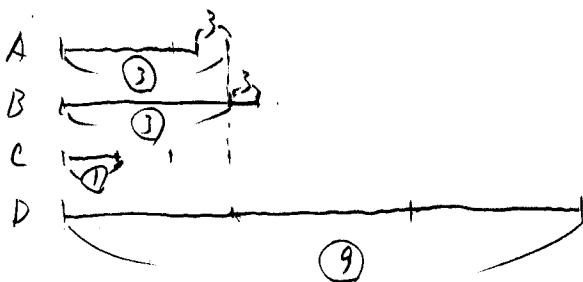
12時間 24時間 16時間 合計52時間

$$18:52 = 81:\square \quad \square = \frac{26 \times 81}{18} = 234$$

$$234 \div 60 = 3 \text{ 分 } 54 \text{ 秒}$$

A 3分54秒

(5)



C 4 ① y 5 4 2

$$496 \div (\underbrace{3+3}_{16} + \underbrace{1+9}_{10}) = 31 \dots 1$$

$$A \quad 31 \times 3 - 3 = 90 \quad B \quad 31 \times 3 + 3 = 96$$

$$C = 31 \quad D = 31 \times 9 = 279$$

$A=90, B=96, C=31, D=279$

$$\begin{array}{r} 31 \\ 16 \overline{) 496} \\ \underline{48} \phantom{0} \\ 16 \end{array}$$

(6)  $(300-30) \times 0.2 = 54g$  1回目に出た食塩水の食塩

$54 \times \frac{300-30}{300} = 54 \times 0.9 = 48.6g$  2回目

$48.6 \div 300 = 0.162$

A 16.2%

[2] (1)  $52800 \times 1.25 = 66000$ 円 売上げ予定

$66000 \div 80 = 825$

A 825個

$$\begin{array}{r} 825 \\ 80 \overline{) 66000} \\ \underline{64} \phantom{00} \\ 20 \phantom{00} \\ \underline{16} \phantom{00} \\ 40 \phantom{00} \\ \underline{40} \phantom{00} \\ 0 \end{array}$$

(2)  $80 \times (1-0.2) = 64$ 円 ... 定価の2割引き

$52800 + 4560 = 57360$ 円 ... 売上げ

$(80 \text{円} \times 39 + 64 \times 11) \div (39 + 11) = 76.48$ 円 ... 1個の値段の平均

$57360 \div 76.48 = 750$ 個 売れた数

$825 - 750 = 75$

A 75個

$$\begin{array}{r} 76.48 \\ 50 \overline{) 3824} \\ \underline{350} \phantom{00} \\ 324 \phantom{00} \\ \underline{300} \phantom{00} \\ 240 \phantom{00} \\ \underline{200} \phantom{00} \\ 40 \phantom{00} \\ \underline{40} \phantom{00} \\ 0 \end{array}$$

[3] (1)  $5 \times 5 \times 3.14 \div 10 = 7.85$  ... 高さ

$10 \times 3.14 \times 7.85 + 78.5 \times 2 = 403.49$

A 高さ 7.85cm 表面積 403.49cm<sup>2</sup>

$$\begin{array}{r} 31.4 \\ \times 7.85 \\ \hline 1570 \\ 2512 \\ 2198 \\ \hline 246.49 \end{array}$$

(2)  $(3.14 - 10 \times 2) \div 2 = 5.7$

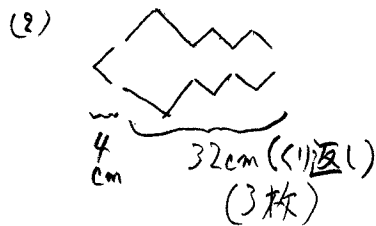
$5 \times 5 \times 3.14 \times 5.7 = 447.45$

A 高さ 5.7cm 体積 447.45cm<sup>3</sup>

$$\begin{array}{r} 78.5 \\ \times 5.7 \\ \hline 5495 \\ 3925 \\ \hline 447.45 \end{array}$$

4)  $(6+4+2 \times 4+4+4+2 \times 4+4+6) \times 2 = 88$

$\underbrace{6 \times 6 \times 3}_{\text{木}} \text{枚} + \underbrace{4 \times 4 \times 4}_{\text{木}} \text{枚} - \underbrace{2 \times 2 \times 6}_{\text{重}} = 148$       A 周  $88 \text{ cm}$  面積  $148 \text{ cm}^2$



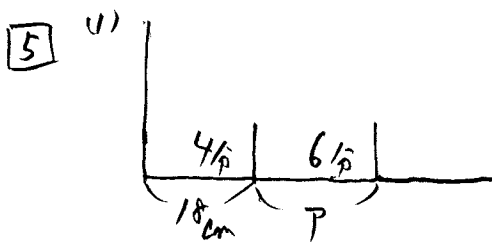
$$168 - 4 = 164$$

$$164 \div 32 = 5 \text{ 割り } 4$$

最後の >

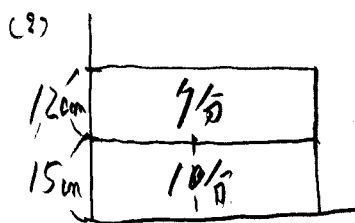
$$3 \times 5 = 15$$

A 15枚



$$4:6 = 18:P \quad P = \frac{6 \times 18}{4} = 27$$

A 27 cm



$$15 \text{ cm} \div 10 = 1.5 \text{ cm/分}$$

$$1.5 \times \frac{1}{5} = 2.0 \text{ cm/分}$$

7分で12cm

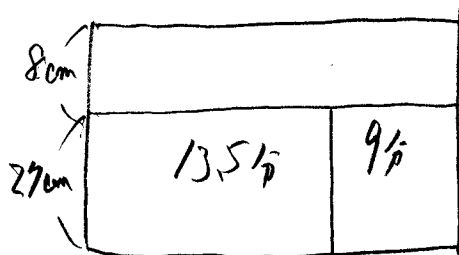
つぎの計算

$$(12 - 1.5 \times 7) \div (2.0 - 1.5) = 3 \text{ 分} \dots 1.5 \text{ 倍の時}$$

$$7 - 3 = 4 \quad 10 + 4 = 14$$

A 14分後

(3) もし A, B に  $\frac{1}{5}$  倍の速さで入れ子と  $27 \text{ cm} \div 2 \text{ cm/分} = 13.5 \text{ 分}$



$$27:8 = (13.5+9):\square$$

$$\square = \frac{22.5 \times 8}{27} = \frac{180}{27} = \frac{20}{3} = 6\frac{2}{3} \text{ 分}$$

$$26 + 6\frac{2}{3} = 32\frac{2}{3} \text{ 分}$$

A 32分40秒