

$A = 240 \text{ cm}^2$

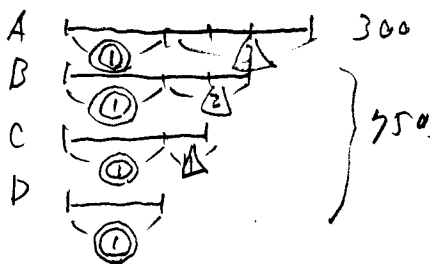
② ① Aを① : すると BCDを ②.5 合計 ③.5 を 1050ml

$$1050 \div 3.5 = 300 \dots \text{①} \dots A$$

Aは300ml

②

$$BCDを 1050 - 300 = 750$$



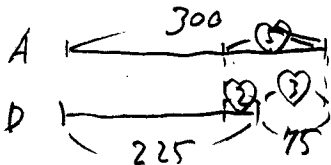
$$\begin{array}{rcl} A \times 3 & \text{③} + \triangle 9 & = 900 \\ BCD & \text{③} + \triangle 3 & = 750 \\ \hline \text{差} & \triangle 6 & = 150 \end{array}$$

$$A - D = \triangle 3 = 150 \div 2 = 75$$

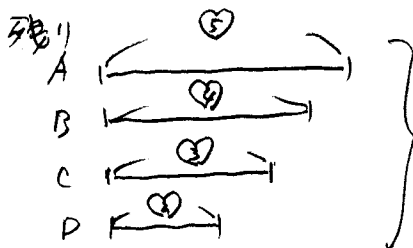
A 75ml

③

$$\text{①} = 300 - 75 = 225$$



$$\heartsuit = 75 \div 3 = 25$$



$$\heartsuit 14 = 25 \times 14 = 350$$

A 350ml

③

(1) 上り 下り

$$1 \text{時間} \div 3 \text{km} - 1 \text{時間} \div 5 = \frac{1}{3} - \frac{1}{5} = \frac{2}{15} \text{時間} / \text{km}$$

$$60 \text{分} \times \frac{2}{15} = 8 \text{分}$$

A 8分

(2)

行 帰

$$2 \text{時間} 18 \text{分} - 1 \text{時間} 33 \text{分} = 36 \text{分}$$

$$36 \div 8 = 4.5 \text{km}$$

⑤ 4.5km

$$4.5 \text{km} \div 5 \text{km/時} = 0.9 \text{時間}$$

$$1 \frac{33}{60} - 0.9 = \frac{31}{20} - \frac{18}{20} = \frac{13}{20} \text{時間} \dots \text{平地}$$

$$4 \times \frac{13}{20} = 2 \frac{3}{5} = 2.6$$

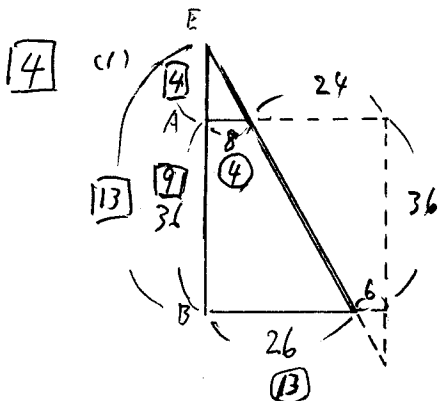
④ 2.6km

- (3) 1時間36分 - 1時間33分 = 3分、2秒、...  $\frac{3}{60}$  時間 ( $\frac{1}{20}$ )  
 $1 \div 4 = \frac{1}{4} \text{ km/時}$  ... 1kmごと 4km/時でかかった時間  
 $1 \div 36 = \frac{10}{36} = \frac{5}{18} \text{ km/時}$  ... 1kmごと 3.6km/時でかかった時間  
 1kmごと 4km/時と 3.6km/時では

$$\frac{5}{18} - \frac{1}{4} = \frac{10-9}{36} = \frac{1}{36} \text{ 時間の差}$$

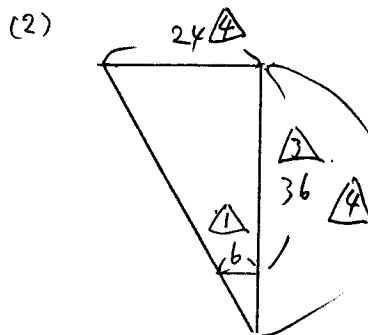
$$\frac{1}{20} \text{ 時間} \div \frac{1}{36} = \frac{9}{5} = 1.8 \text{ km}$$

A 1.8 km

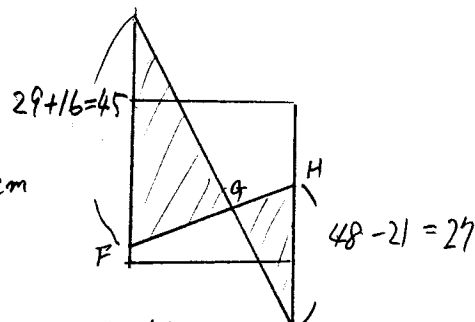


左図より  $36 \text{ cm} \times \frac{4}{9} = 16$

A 16 cm



$36 \times \frac{4}{3} = 48 \text{ cm}$

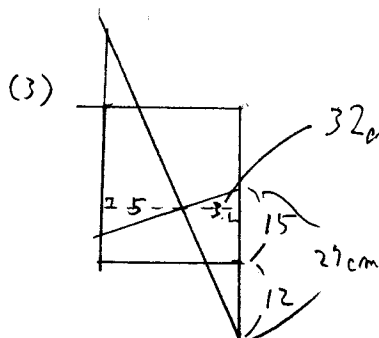


相似比

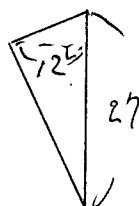
$45:27=5:3$

$\frac{5}{3}$  倍

A  $1\frac{2}{3}$  倍



$32 \text{ cm} \times \frac{3}{5+3} = 12 \text{ cm}$



$= 12 \times 27 \times \frac{1}{2} - 6 \times 12 \times \frac{1}{2}$   
 $= 126$

A 126 cm<sup>2</sup>

$$\boxed{5} \quad (1) \quad 10 \times 10 \times 3 \frac{1}{5} = \frac{2200}{5} = 314.285 \dots$$

$$\underline{A \ 314.29 \text{ cm}^2}$$

$$(2) \quad \text{円の半径を } r \text{ とすると円周は } 2 \times 3 \frac{1}{5} = \frac{44}{5} \text{ cm}$$

$$\text{正方形の一边は } \frac{44}{5} \div 4 = \frac{11}{5}$$

$$\frac{11}{5} : 1 = 11 : 5$$

$$\underline{A \ 11 : 5}$$

$$(3) \quad 11 \times 4 \times 6 = 264 \text{ cm}^2 \dots \text{側面積}$$

$$\text{直径} \times 3 \frac{1}{5} \times 9 = 264$$

$$\text{直径} = 264 \div 3 \frac{1}{5} \div 9$$

$$= \frac{264}{1} \times \frac{5}{22} \times \frac{1}{9}$$

$$= \frac{28}{3}$$

$$\text{半径} = \frac{28}{3} \div 2$$

$$= \frac{14}{3}$$

$$\text{体積} = \frac{14}{3} \times \frac{14}{3} \times 3 \frac{1}{5} \times 9$$

$$= 14 \times 14 \times \frac{22}{5}$$

$$= 616$$

$$\underline{A \ 616 \text{ cm}^3}$$